

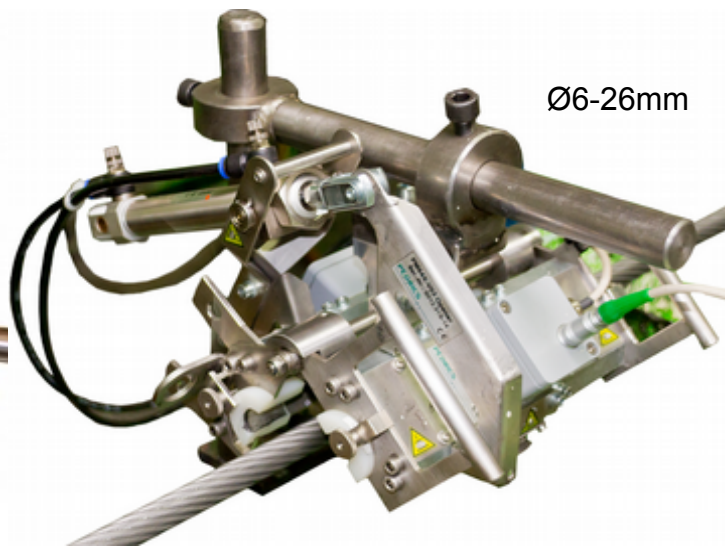
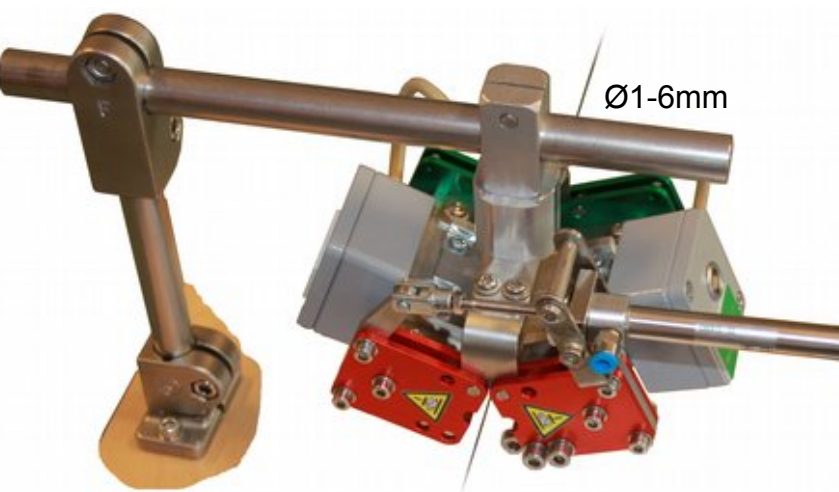
MISS Monitor

Magneto-inductive Sensor Systems

**for quality assurance in
wire rope and wire production**

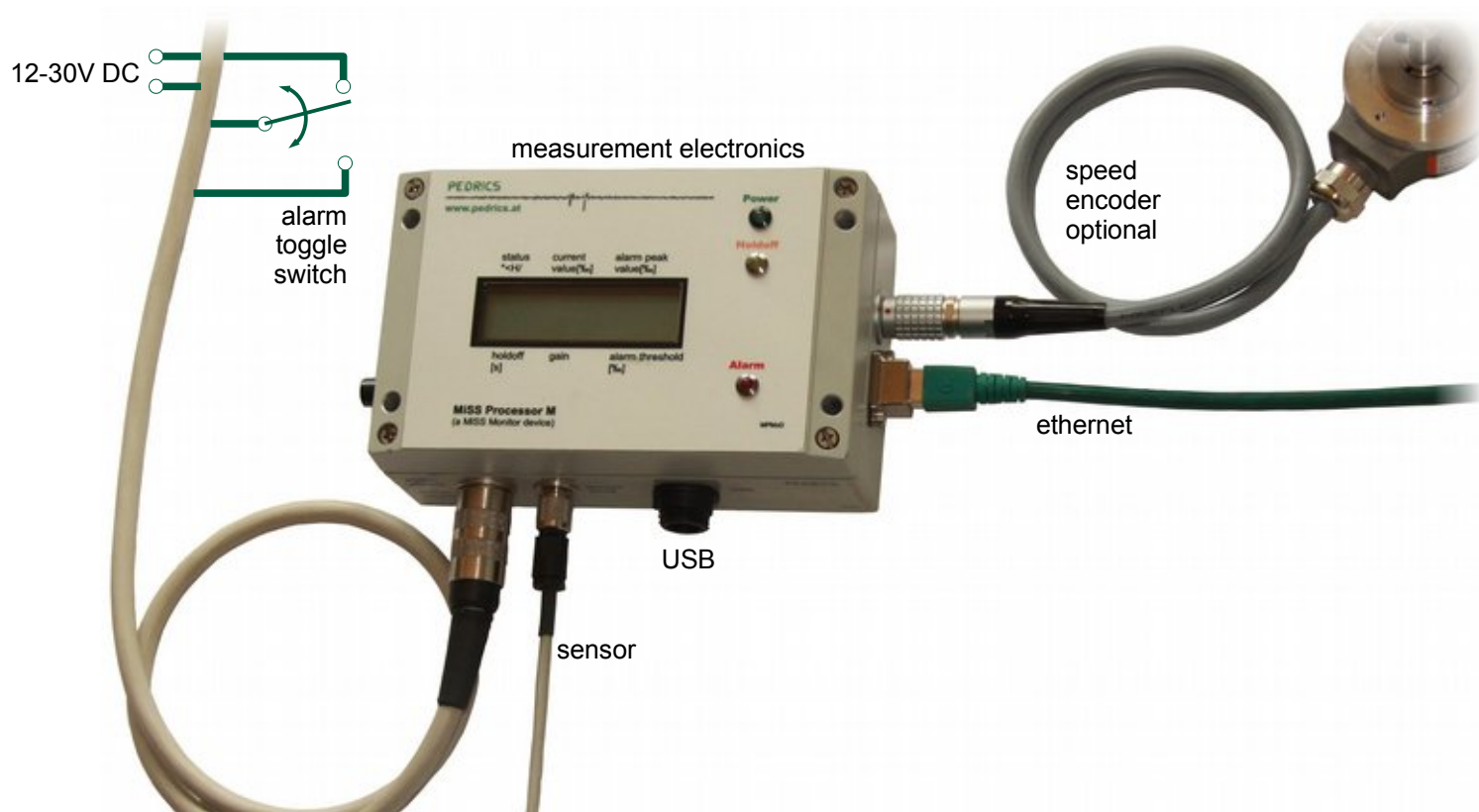
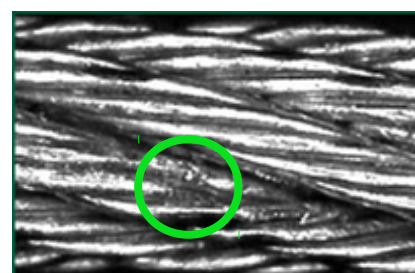
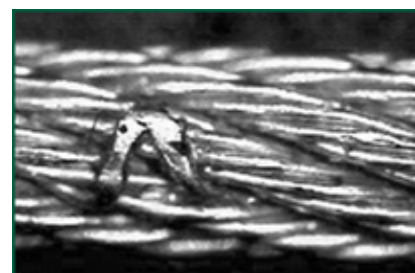
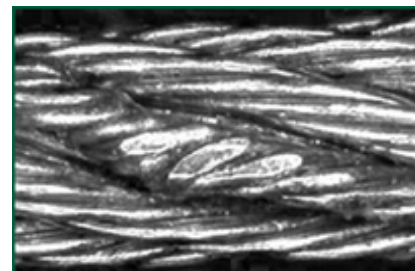
- 100% error free product
- reduction of rejects
- measurement electronics in plant network

buy or rent!!



Comfortable and quick operation

- magnetisable wire or wire rope passes through sensor
- sensor locates rope defects such as wire breaks, pressure marks or structural defects
- configurable error threshold
- stand alone electronics measuring device activates an alarm switch in case of a rope defect beyond the error threshold
- optional data are very flexible available via network: just the event alarm or all measuring data
- multi-optional processing of the alarm switch e. g. automatic stop of the strander or placing a coloured marker on the relevant spot of the rope
- PC is needed for configuration only; wireless connection optional
- no additional qualification of your production staff member is needed



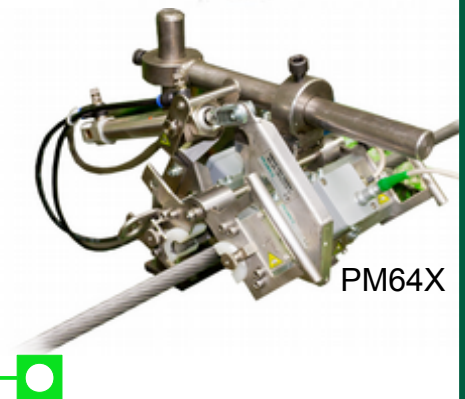
Closed sensors

- rope diameters from 0,5 – 9,0 mm (PM51, PM52 od. PM53)
- measuring coil is optimized for one rope diameter
- measuring coil not exchangeable



Separable sensors

- rope diameter from 1 – 6mm (PM63X)
guiding via ceramic lugs placed directly inside the sensing coil
- rope diameter from 6 – 26 mm (PM64X)
guiding via plastic half shells or optional via carbide metal
- exchangeable sensing coil available in 2mm steps



Fields of application

- strander or wire drawing machine
- cage type strander (optional wireless)
- recoiling machine
- testlabs etc.
- data optional storable - useable for inspection e. g. ropes at installation or to secure the transport

„Numerous of our product extensions were developed because of individual requests of our customers. We are pleased to develop custom-made solutions for individual needs of your production facility!“

System data

- magnetisable materials assumed (permeability $\mu_r > 1$, nirosta® applicable)
- approximately constant speed (+/- 10%): supported area 0,1 – 4m/s (260 m/min)
- optional measuring speed incl. speed compensation in data: 0,1 – 1m/s (60m/min)
- power supply voltage: 12 – 30 V DC
- USB or Ethernet (Modbus) interface to PC or via network
- supported operating systems: WinXp®, Win7®, Win10® und Linux (min. Kernel 2.6)

Enterprise

- MiSS Monitor 15 years in use in wire rope production
- 20 years of personal experience in developing and constructing magneto-inductive measuring systems
- state of the art technology



Geschäftsführung
Dipl. Ing. Gerhard Hinterndorfer

References

industrial rope producers



accredited test laboratories



ropeway companies

